

MEC-MOR CMP

GARMENT LENGTH CIRCULAR KNITTING MACHINE
WITH RIB BORDER

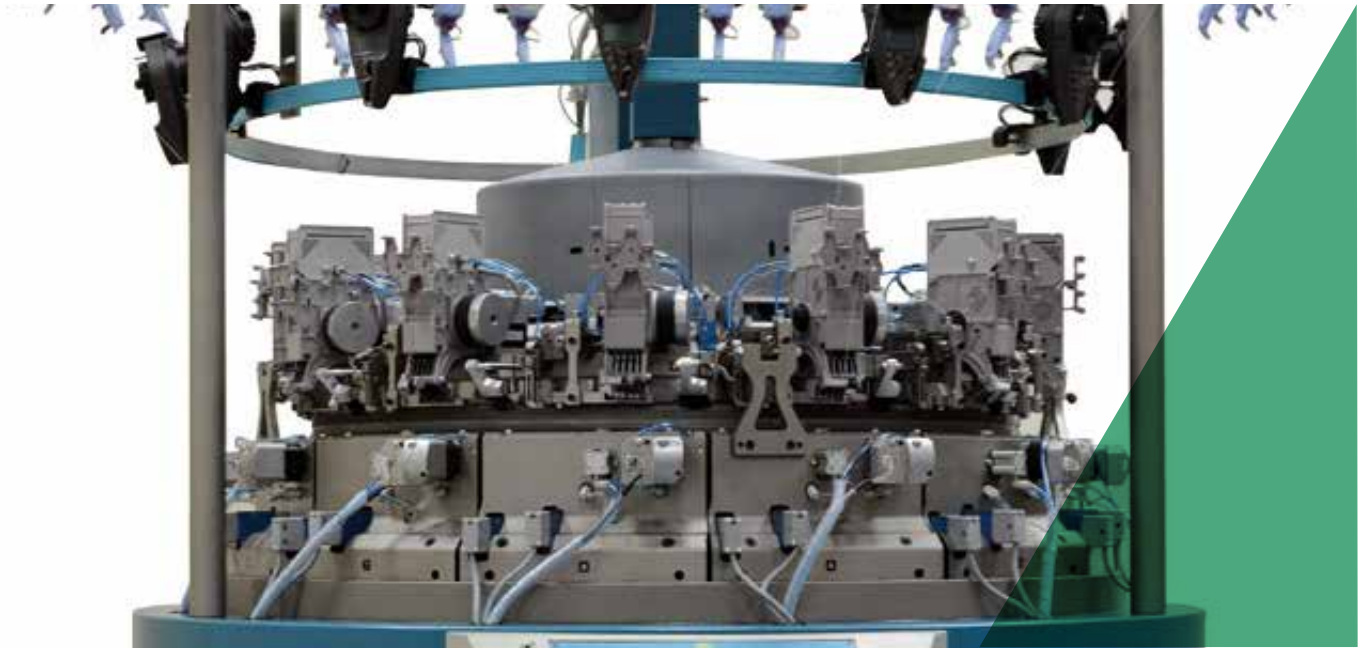


MEC-MOR

MEC-MOR

CMP





MEC-MOR CMP

Garment Length Circular Knitting Machine complete with rib border separation. The Mec-Mor CMP is synonymous of productivity, quality and reliability.

MEC-MOR CMP

- The new double jersey circular Mec-Mor CMP with open variable panel (Variatex Technology) for the production of garments in weft knitting offers a high quality finished item (circular knitting machine) and high productivity with large number of feeds. The variable width of the fabric panel allows to set the number of working needles for the required product which in turn enables with one single machine to produce all the sizes without wastages. This 33" diameter machine has gauges ranging from E7 to E20 with 12 feeds. It is designed with needle to needle selection on 3 technical ways both for the cylinder and for the dial. Each feed is equipped with a combined knitting/transfer system, therefore at every revolution of the cylinder the programming system can set each single feed either as a "knit feed" OR as a "transfer feed", achieving every knitting stitch composition with maximum productivity. Transfer can be one way (from dial to cylinder or from cylinder to dial) or double way (the transfer takes place at the same time in both directions on the same feed). A "double hunch" transfer cam is design to perform with success even with yarns that are difficult to work with. The yarn feeding system uses a 4 colour striper with the possibility of feeding bare lycra when producing stretch garments. The striper is electronically controlled by a step by step motor and a pneumatic selector. Machine features stitch structures with many colours or with various types of yarn, like:
 - jacquard (single and double jersey), with various color possibility per course
 - 4 color stripes
 - plated effects
 - pockets, etc

Diameter	33"							
Gauge	7	8	10	12	14	16	18	20
Needles qty	578	660	826	992	1156	1322	1488	1650
Feeds	12 "integral" self-configurable (each feed can be set up for either knit or transfer and reversed)							
Racking	+/- 3 needles with centesimal correction							
Delayed timing	Dial and cylinder							
Needle bed width	max 2100 mm							
Striper	4 yarns per feed (1 for the elastomer)							
Stitch density	Adjustable on 100 levels							
Takedown	Pneumatic with 17 independent rollers (in 2 areas) and with programming at 100 levels							
Speed	Max 22 RPM (1.1 m/s)							
Safety stops	Needle - Dial selector - Cylinder selector - Broken yarn							
Motor power	5.5 Kw							
Average power cons.	4 Kw							
Frequency	50 - 60 Hz							
Feeding Units	LGL compact - SJF (12 / 14 gg) - MFS2 - SFE - YOYO (for elastomer)							
Design transfer	USB port data transfer							
Graphic software	Santoni SM1 (Windows compatible)							

Optionals:	Kit Lycra	Lycra feeding units	Graphic Software
------------	-----------	---------------------	------------------

Yarn count		
machine gauge	Stiching	
	RIB / Maglia Unita - Jacquard	Jersey / Rasato - Links, trecce
7	da 2/36 a 2/18	da 2/22 a 2/10
8	da 2/40 a 2/22	da 2/26 a 2/12
10	da 2/44 a 2/26	da 2/30 a 2/14
12	da 2/56 a 2/32	da 2/36 a 2/18
14	da 2/72 a 2/36	da 2/42 a 2/22
16	da 2/76 a 2/54	da 2/48 a 2/32
18	da 2/80 a 2/68	da 2/60 a 2/50
20	da 2/100 a 2/80	da 2/80 a 2/70

I titoli sono indicativi per fili ritorti classici

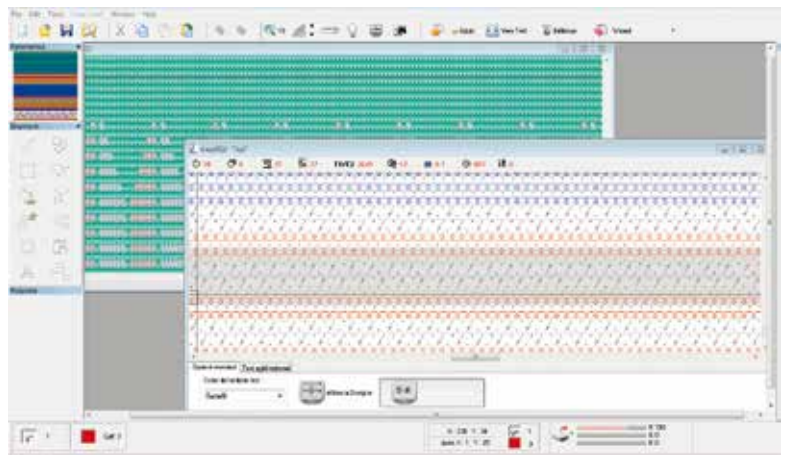
SOFTWARE

Control software uses a 10,4" wide touchscreen display with SANTONI SM1 graphic programming software.

This fast and multi-windows software, comes complete with many utilities to make it easy for the user to copy and replicate, geometric functions, etc. Its tools are specifically designed for knitwear and making technical drawings.

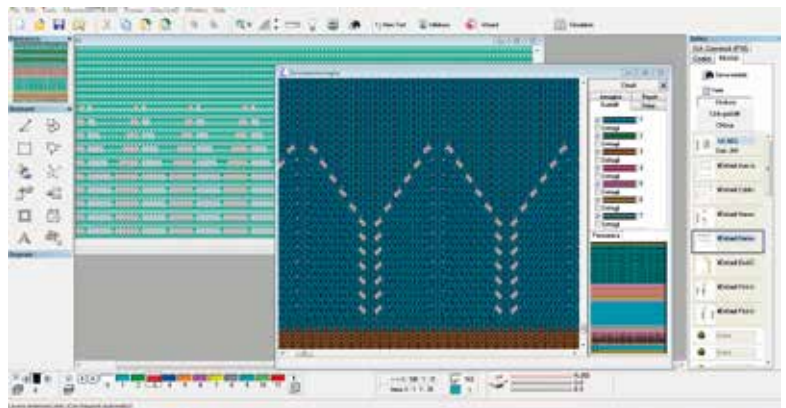
Programming is structured to ease and speed up the knitting of fabrics like: jacquard, dropped stitches, transfer stitches, braiding, etc. A border supplied on the software library complete with separation can be applied to each fabric. Pattern is built using the colours provided in the library. Colours will define each working sequence in the machine in order to automatically obtain the preselected stitch type. The library lists modules that if inserted in the pattern allow for automatically achieving complex sequences of knit and transfer stitches. An auto-test module available in the library can be inserted to highlight stitch profile and trouble shoot unidentified errors.

All machine parameters like: stitch density, take-down speed, etc are graphically managed in the drawing using side icon bars. A single working window allows for a quick and rapid visualization of the working area. The same program can be used independently regardless of the different gauges, simply by inserting data on the machine. It is also possible to import designs from several origins. The program automatically converts inserted data guaranteeing quick and safe conversions. (01)



01

This profile test can be seen also as a simulation to allow to have a realistic result of what the stitch structure looks like. (02)



02

DISCLAIMER:

Technical data given in this brochure are for information only. Santoni S.p.A. reserves the right to modify the machine features without forewarning and without the obligation to apply any modification to the machines already installed. Pictures are exemplifying and have not to be regarded as a reference.



SANTONI SPA

Via Carlo Fenzi, 14 - 25135 Brescia - Italy
Tel. +39 030 376711 Fax +39 030 3366478
P.IVA e CF: IT 00273280172
info@santoni.com - www.santoni.com